



# IMS Animal Welfare Workshop April 12 & 13, 2007 / Paris

## Potential impact of EU legislation on intra-EU store cattle trade

*By Hugues BEYLER*

*FFCB*

*French Livestock Trader Federation / Paris*



# French Livestock Trader Federation (FFCB)

- French Federation of Livestock Traders between breeders and slaughters
  - 850 members distributed in
    - 55 departmental associations
    - 19 regional associations
  - Average turnover superior 8 millions € so a total of around 7 milliards €
- FFCB has specialized sections by sector or type of activity.



# Potential Impact of EU legislation on intra-EU store cattle trade

1. Focus on specific points on EU legislation
  - Main rules on welfare (density, temperature...)
  - Remaining questions (juridical aspects, coherence)
2. Inventory of fixtures and economic stakes
  - Statistics and economical data of european sector of cattle trade
  - Importance of France
  - What about climate
3. Potential impact
  - Estimation of direct impact
  - Indirect impact and consequences
4. Conclusion

# 1/ Focus on specific points of EU legislation

- Transport: regulation 1/2005
  - Main rules on welfare (density, temperature...)
  - Remaining questions (juridical aspects, coherence)
- An “european approach” for a application in the 27 european countries
- A vocation to limit animal transport
- Transfer of responsibilities to economic operators

# Between reality and AW NGOs: an unfinalized regulation

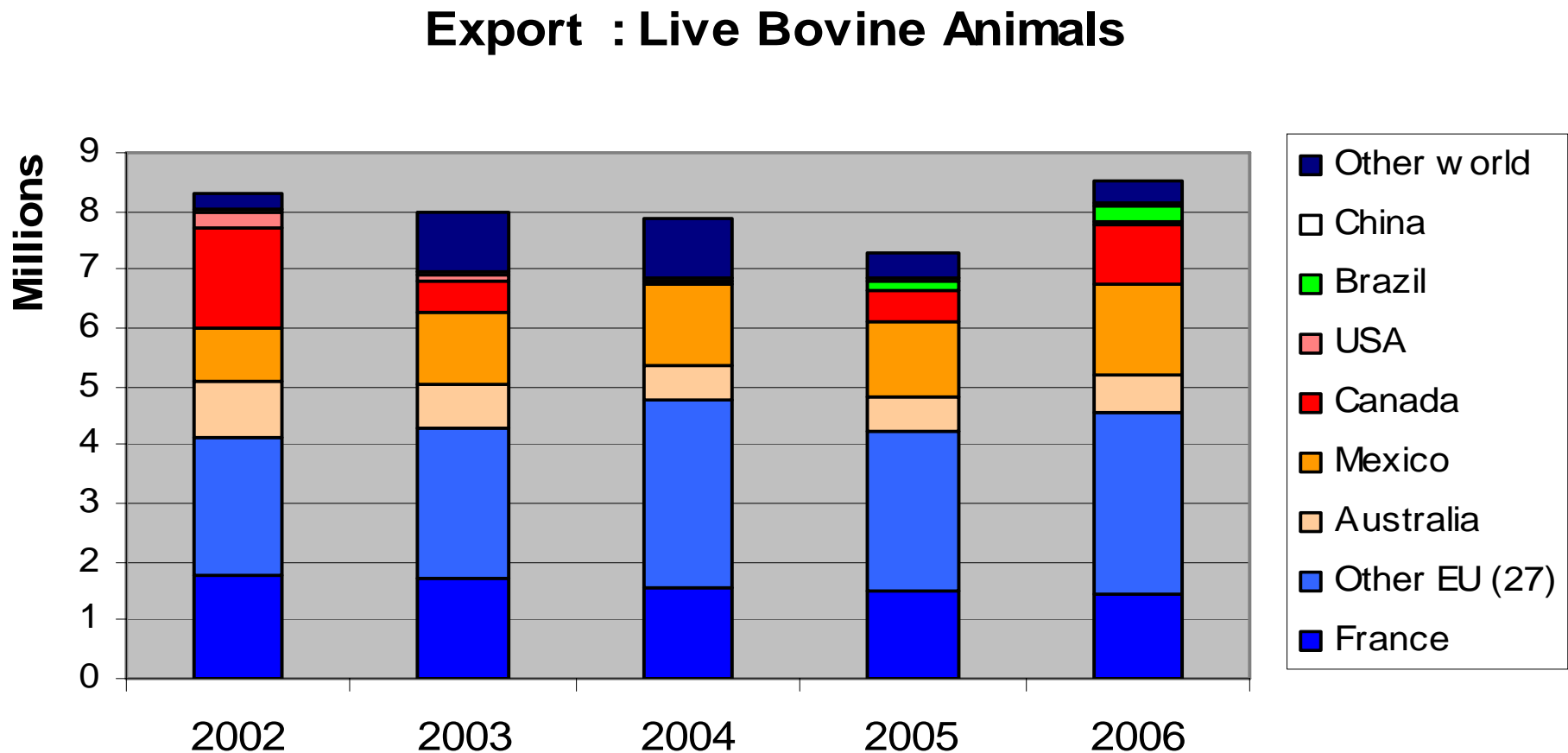
- Transport exceeding 8 h → Special rules
  - Certificate of agreement
  - Recording system for temperature
  - GPS system (starting in 2009)
  - Qualified conveyor
  - Road book if international trip

# Between reality and AW NGOs: an unfinalized regulation

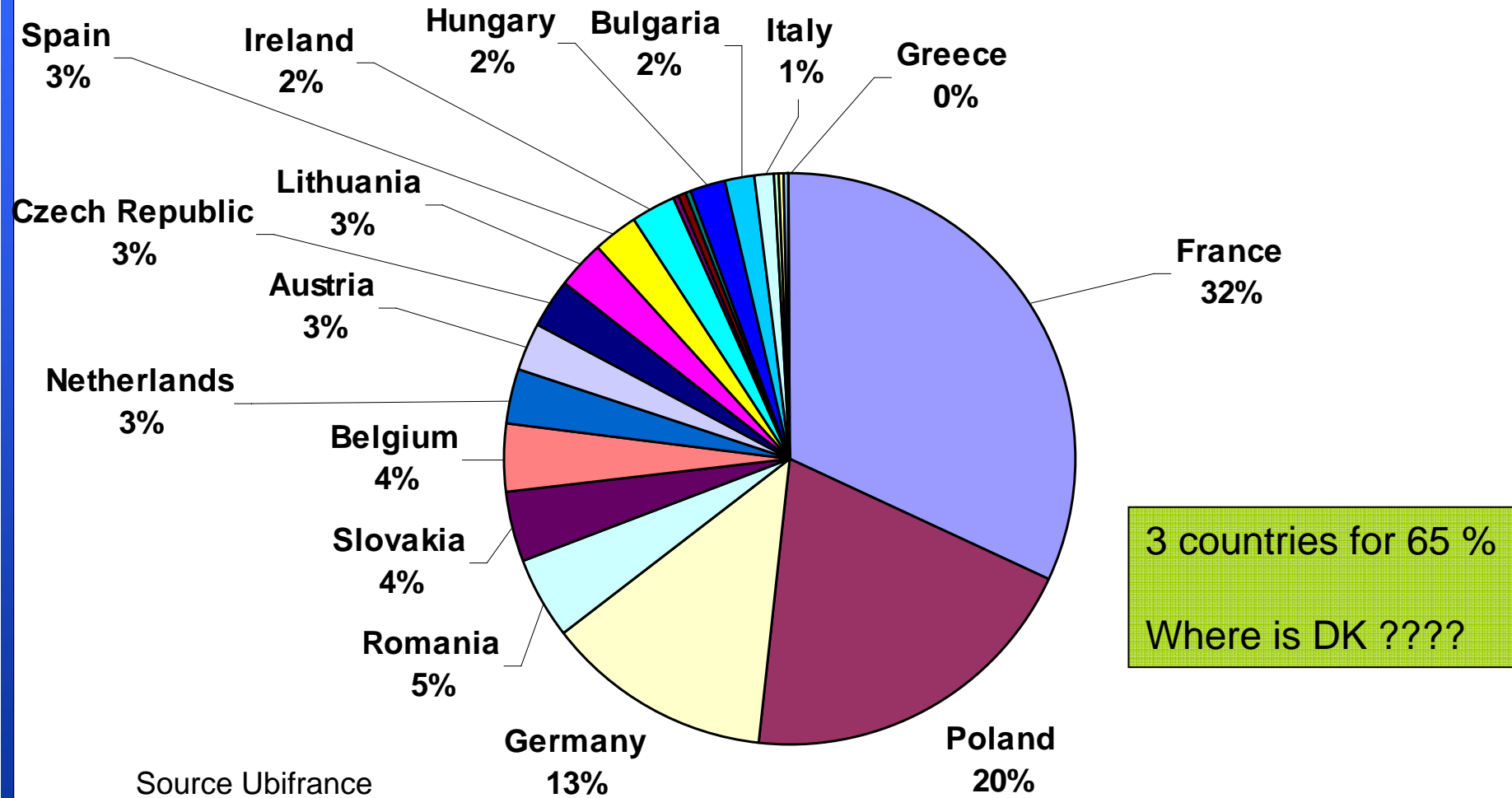
- Temperature
  - Lack of precision
    - Between 0 and 30°C (+/- 5°C)
    - Registration equipment
    - Alert system
  - No significant scientific data / what about professionals studies
  - What to do if temperature is too hot ?
- Responsibility issue
  - Transfert of responsibility : road book
  - Who have to signed ?
- Incoherence and demagogy
  - 80 % of people want more welfare / 99% do not know
  - what is really done and all the progress made last 10 years

## 2/ Inventory of fixtures and economic stakes

- EU and French cattle trade sector;

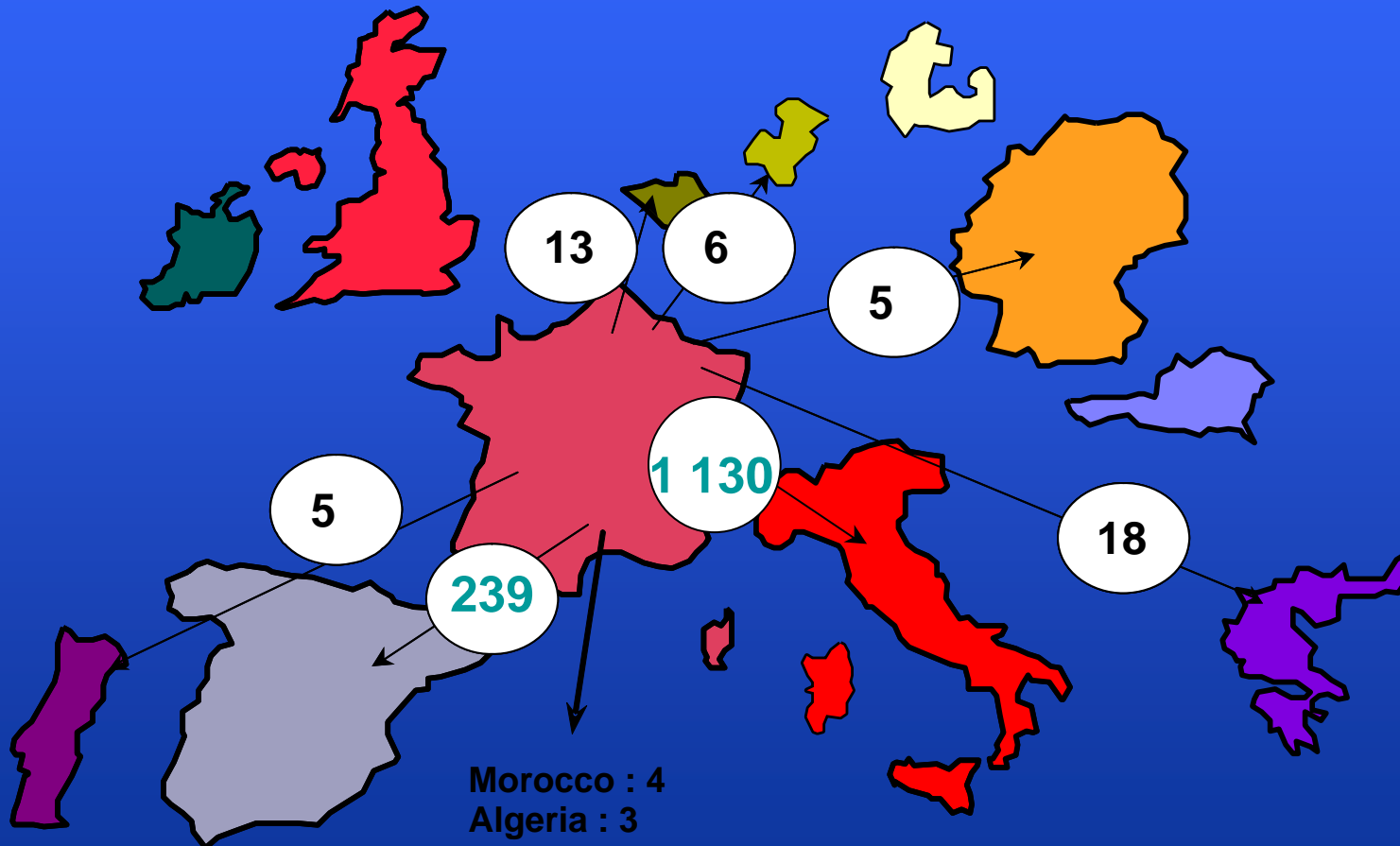


# Exports of live animals in EU



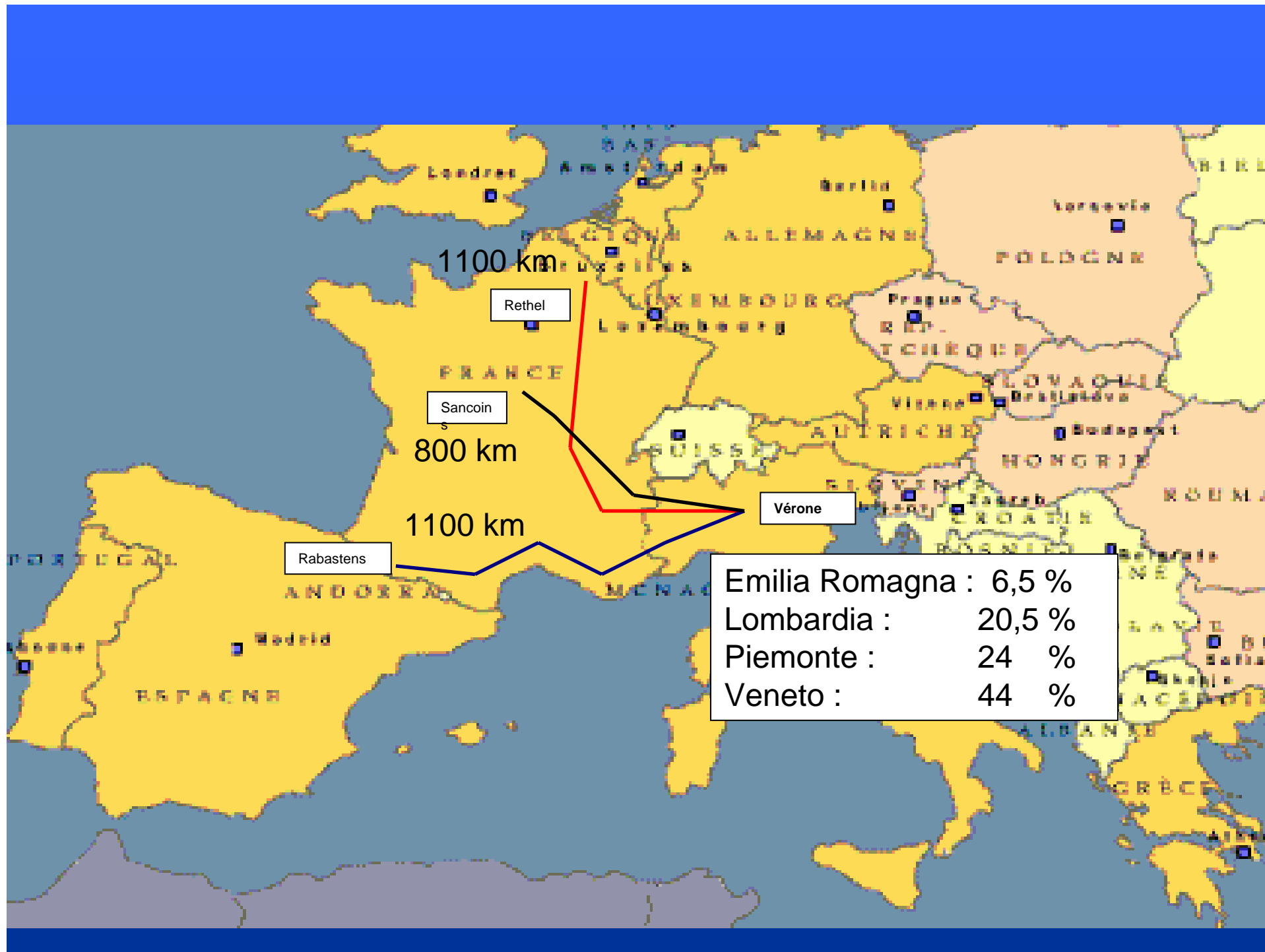
# French Live Cattle Exports

UE-25: 1,424,035 head



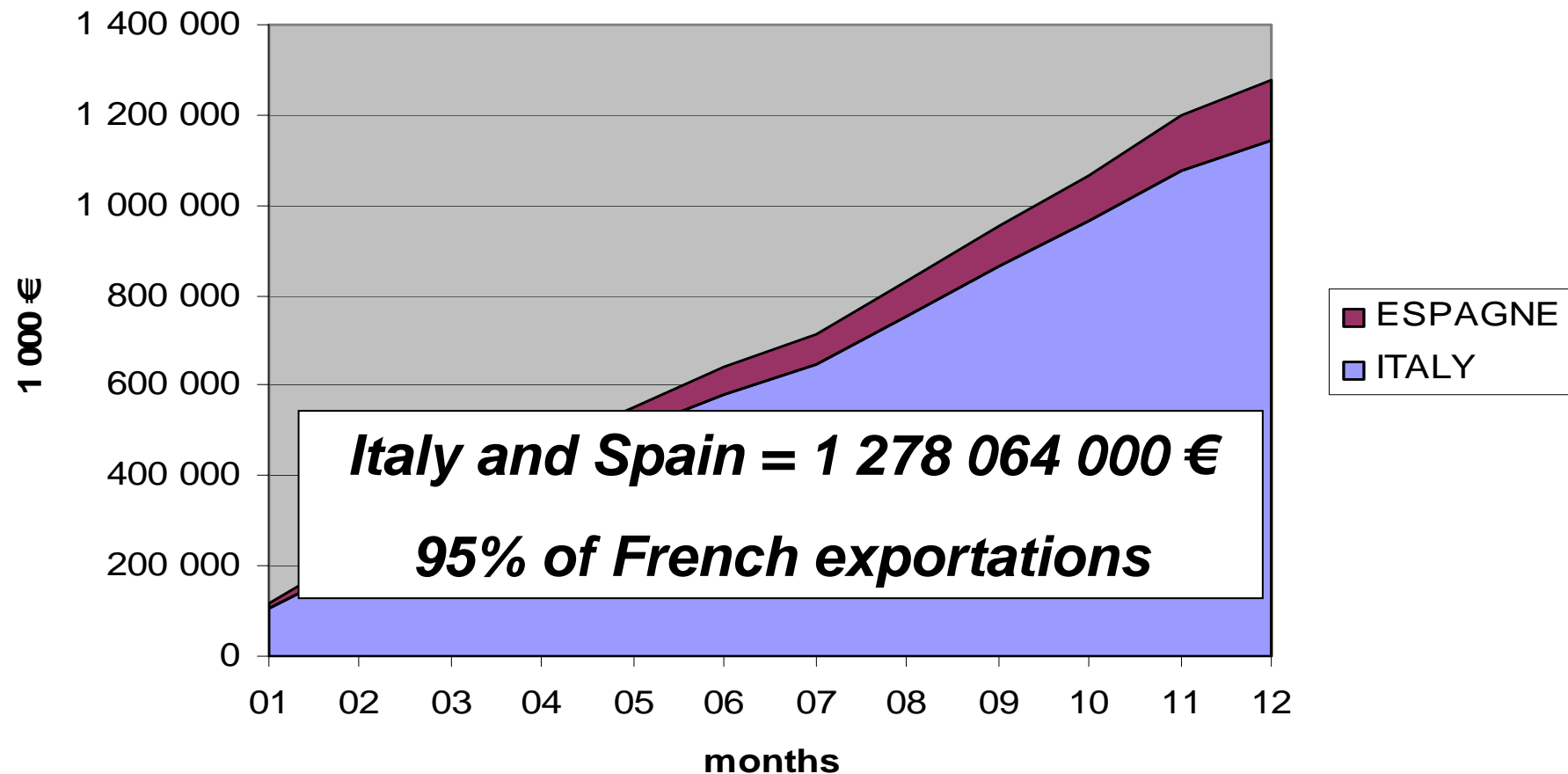
'000 head  
Source: Ubifrance





# *French exports : 1 339 709 000 €*

**Turnovers of exportation from France to Italy and from France to Spain, in cumulative**

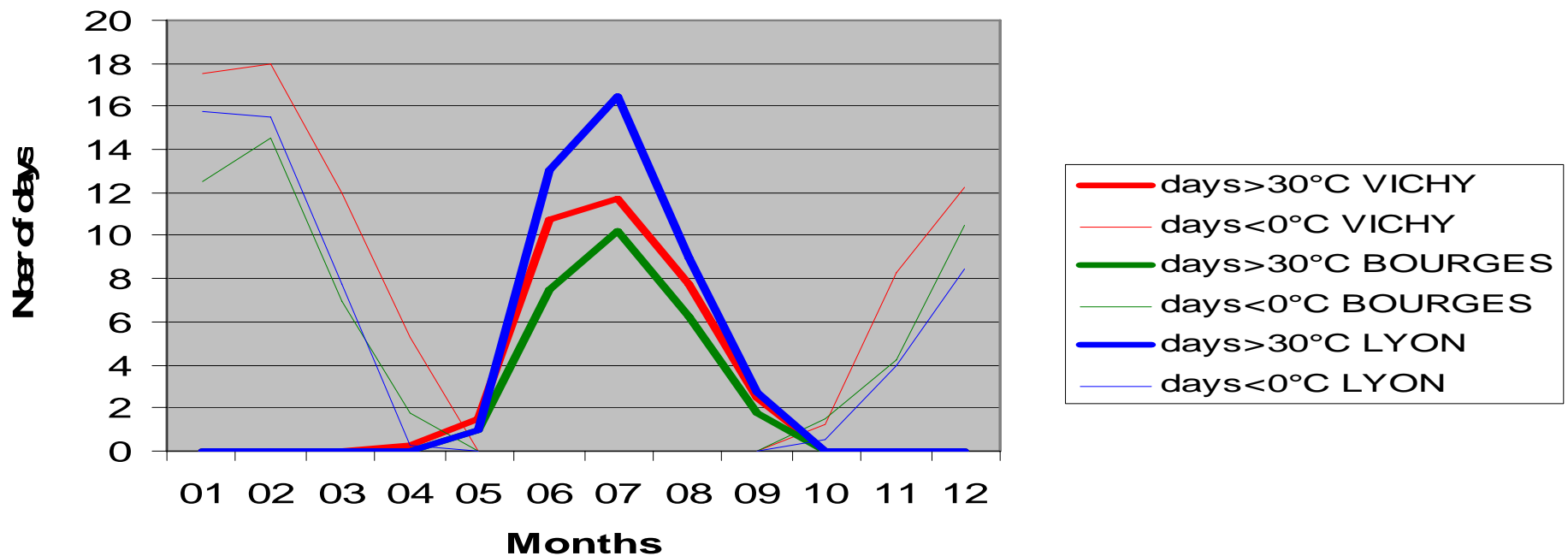


# Calculations

- 2003 to 2006 average number of days with temperature above 30°C or under 0°C
- Export turnover from France to Italy and from France to Spain in 2006
- Import turnover from Germany to France
- → In order to avoid illegal transport

# What about climate?

Number of days, by average from 2003 to 2006,  $<0^{\circ}\text{C}$  and  $>30^{\circ}\text{C}$  in three places of France



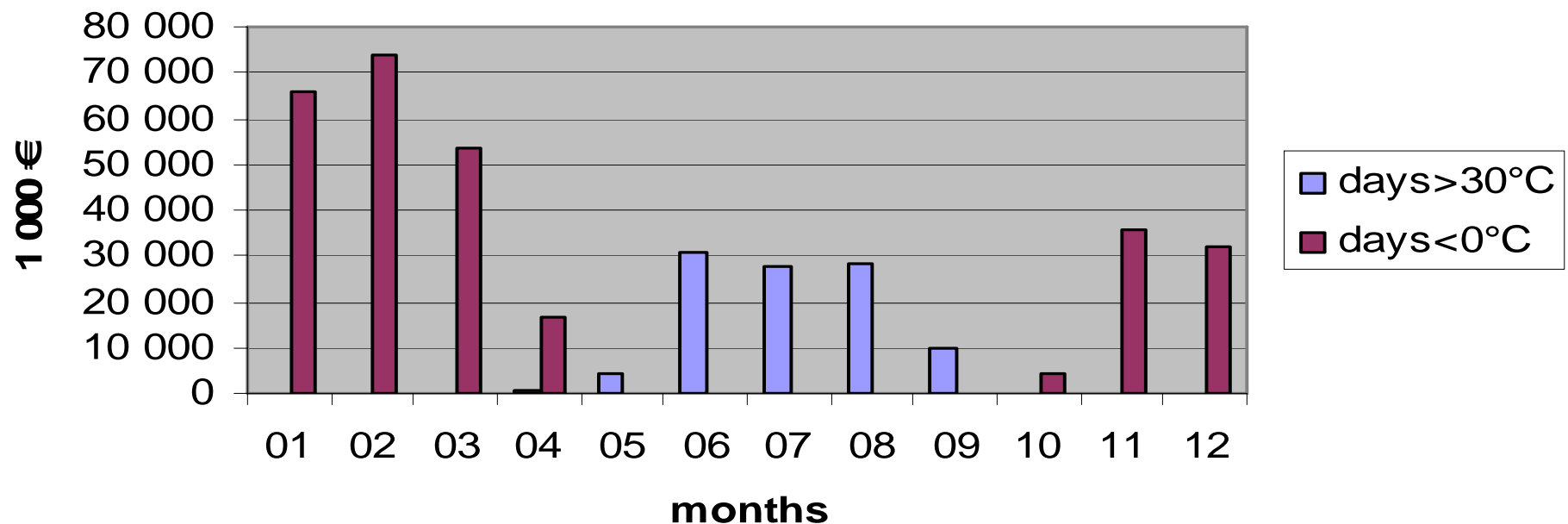
Days  $>30^{\circ}\text{C}$  per year: Max = 42, Min = 27

Days  $<0^{\circ}\text{C}$  per year: Max = 75, Min = 52

# 3/ Potential impact (From Vichy -1)

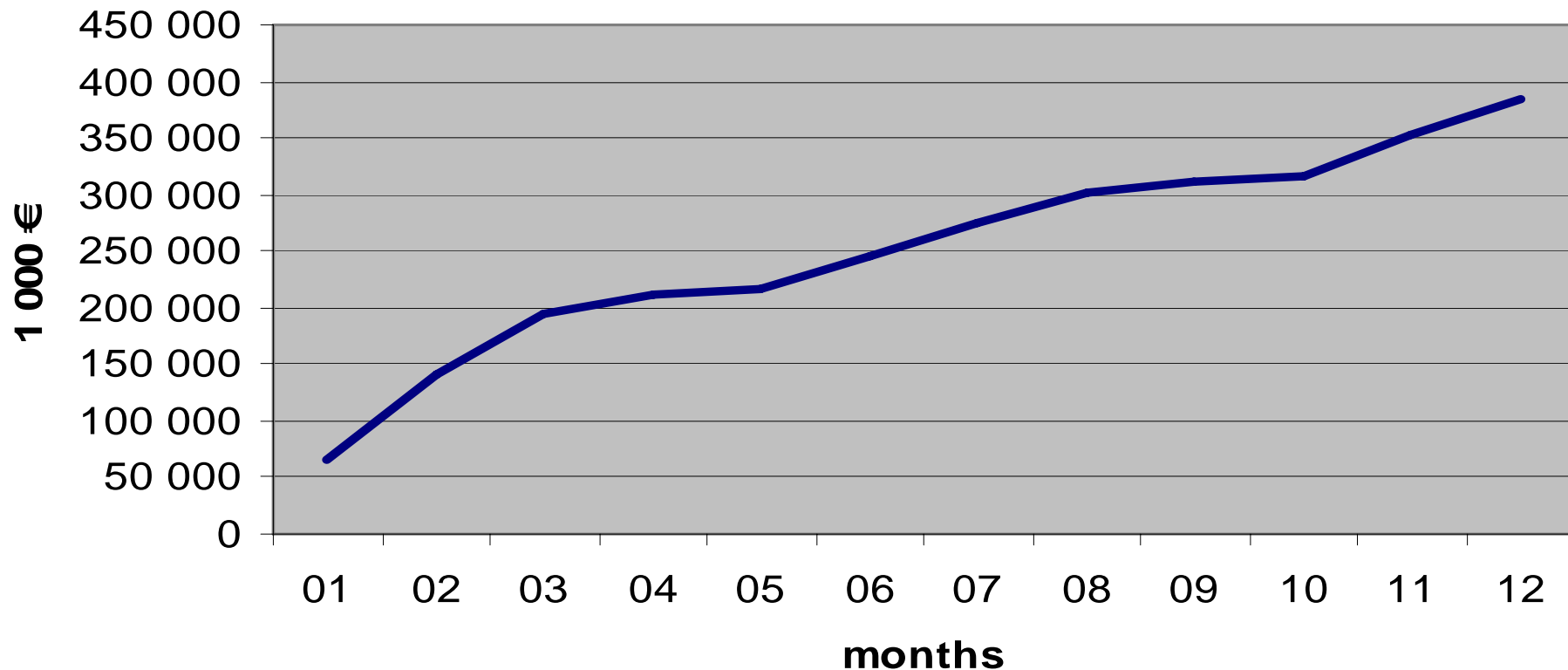
- Example of Vichy: departure or transit point
- Estimation of direct impact + indirect impact and consequences

**Average of loss of exportation turnovers by month according Vichy temperatures and 2006 datas**



### 3/ Potential impact (From Vichy - 2)

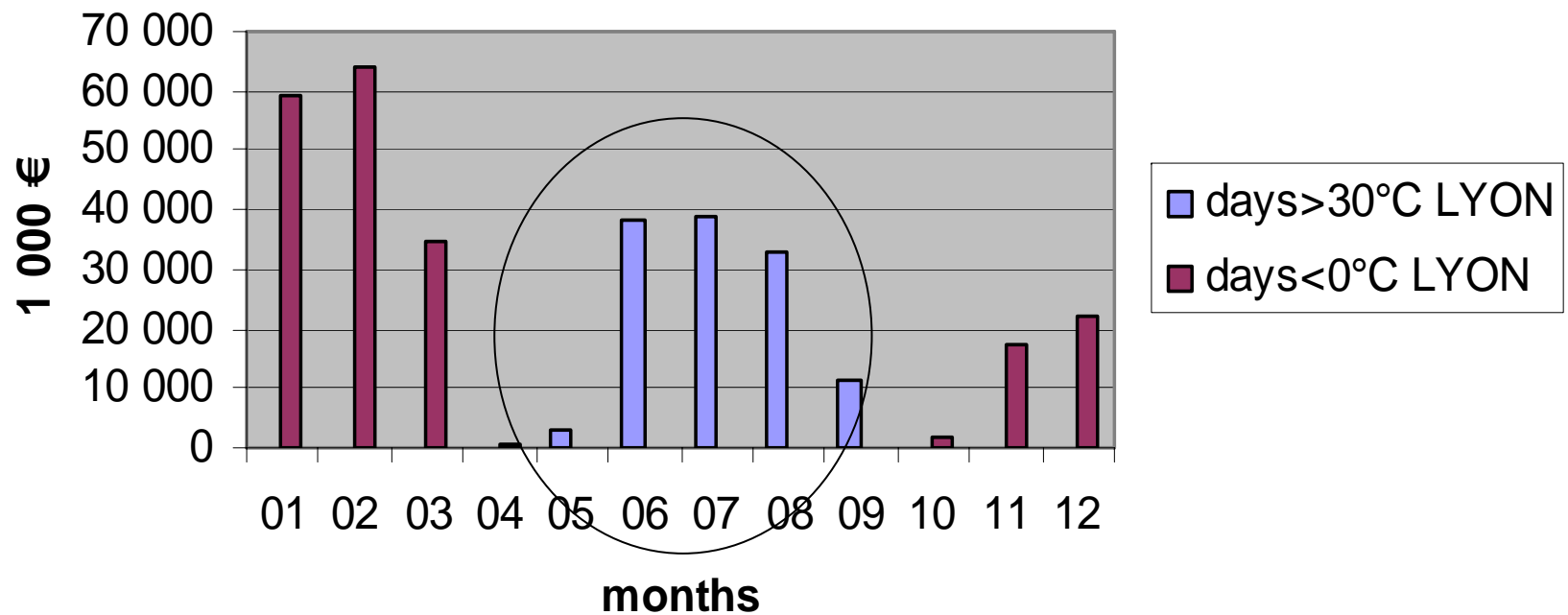
**Cumulated loss of exportation turnovers according  
2006 datas and Vichy temperatures**



*In total 384,361,000 €, i.e. 30% of turnover*

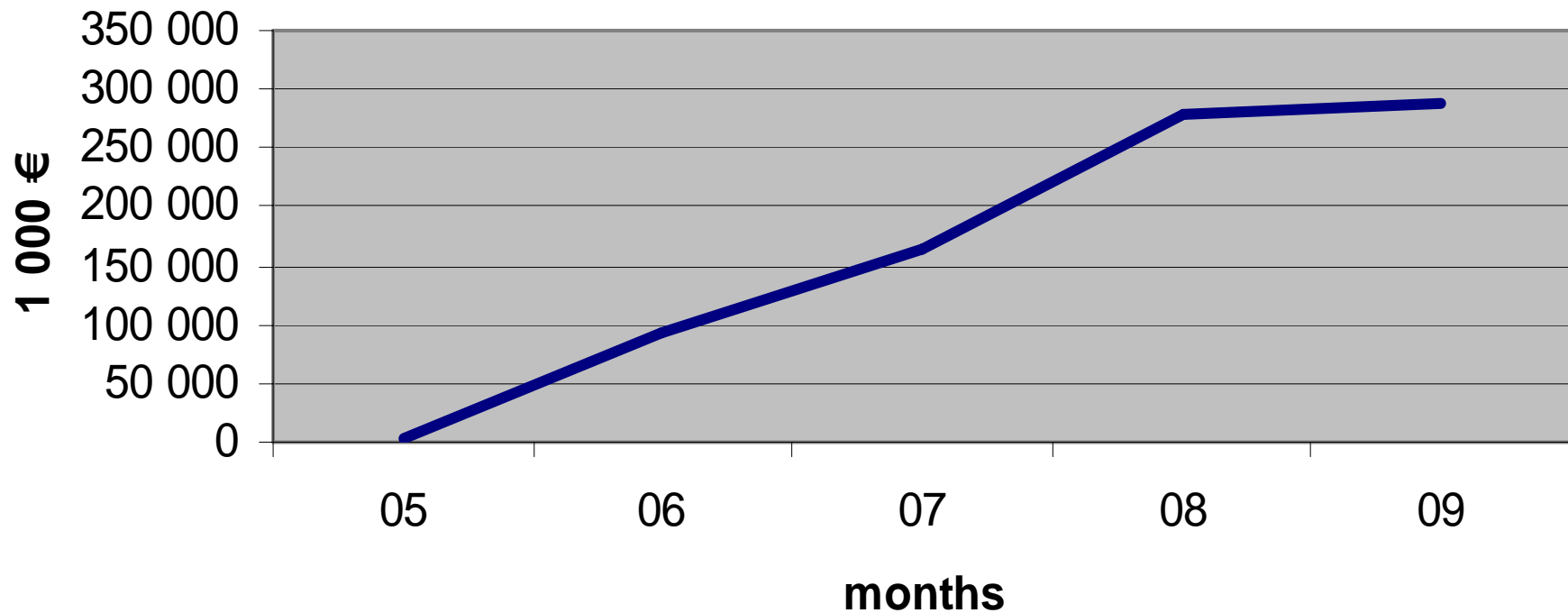
### 3/ Potential impact (From Lyon - 1)

Average of loss of exportation turnovers by months according Lyon temperature and 2006 datas



### *3/ Potential impact (From Lyon - 2)*

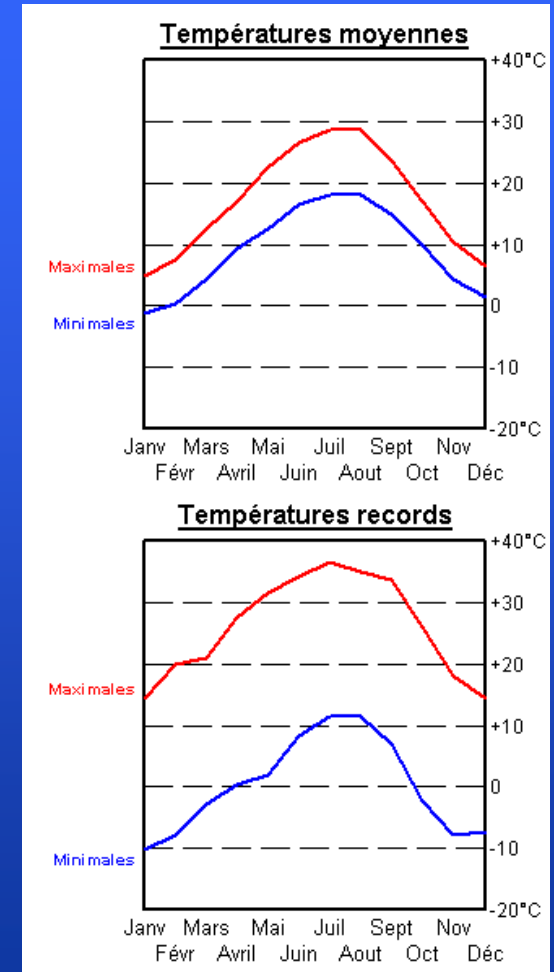
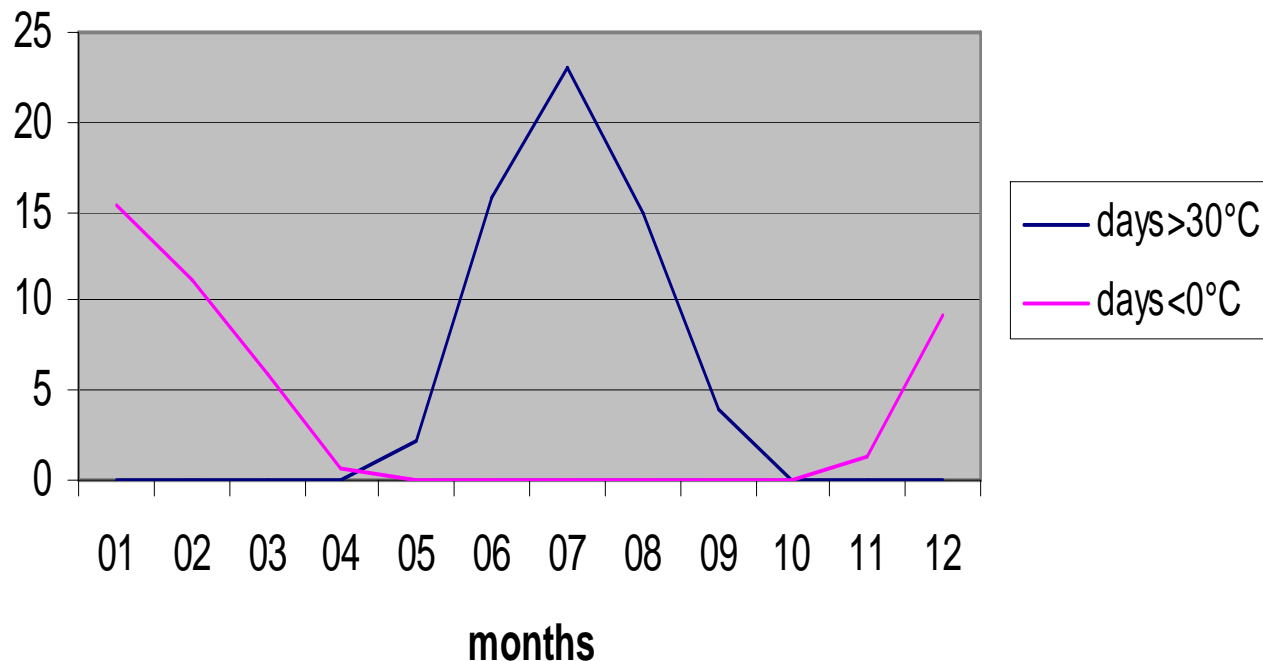
**Cumulative loss of turnovers from may to september  
in Lyon**



# 3/ Potential impact (To Verona - 3)

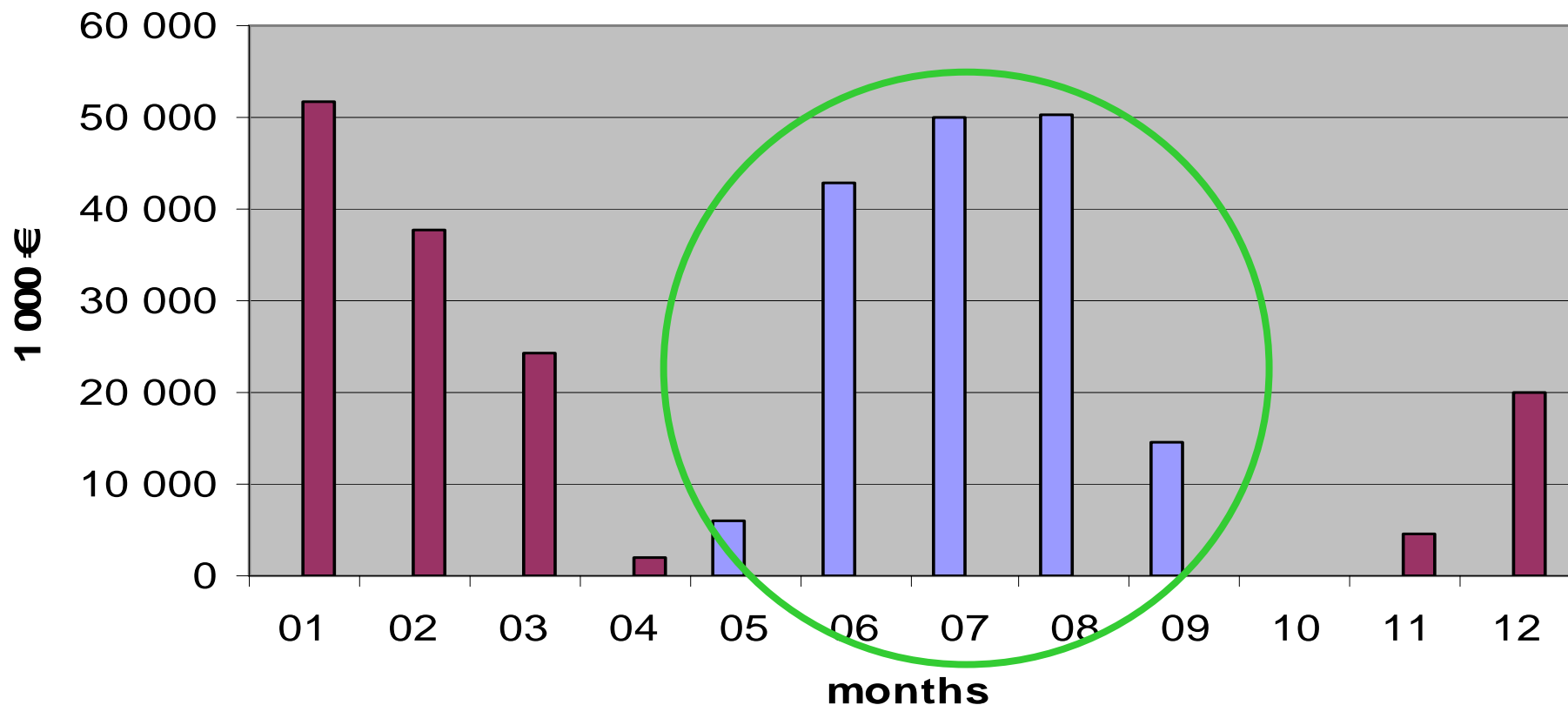
- Example of Verona: destination point

Number of days by average from 2003 to 2006  $<0^{\circ}\text{C}$  and  $>30^{\circ}\text{C}$  in Verona (Italy)



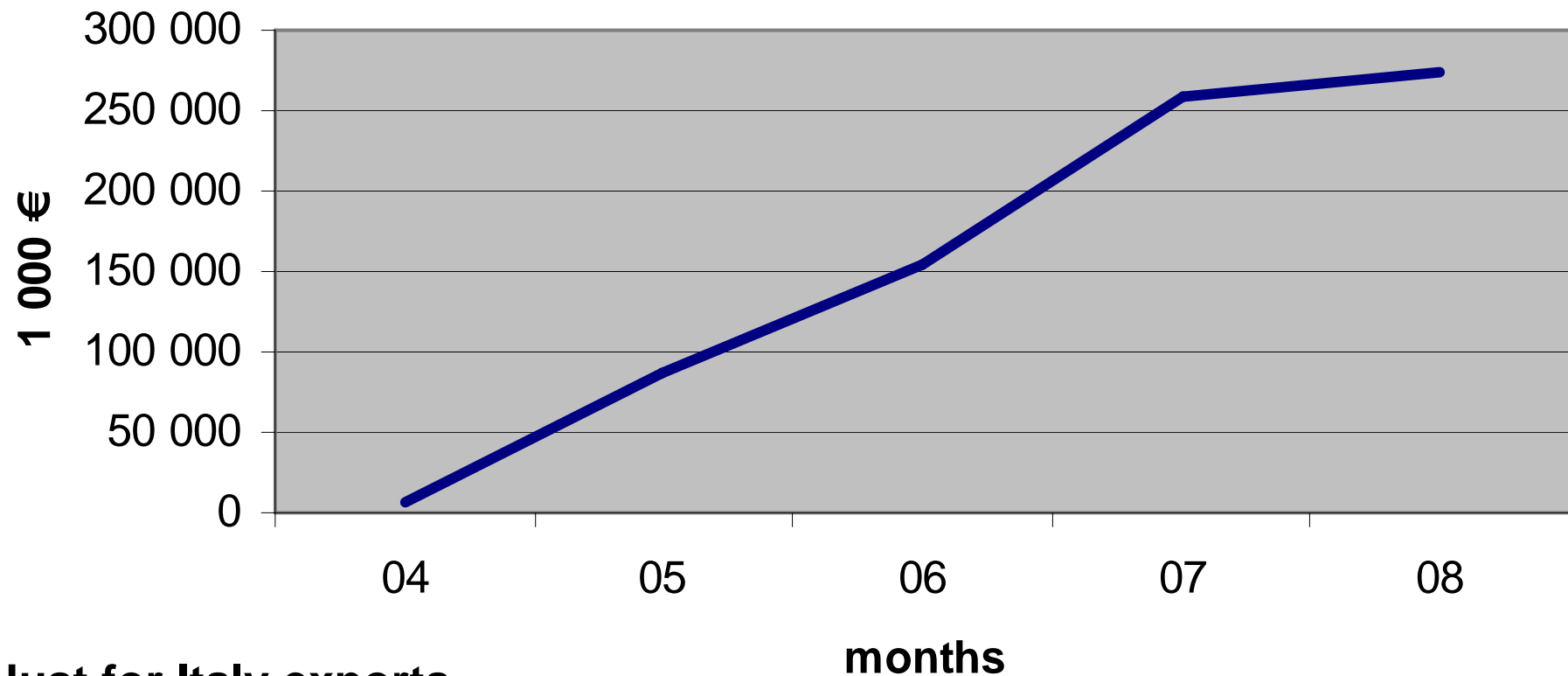
### *3/ Potential impact (To Verona - 4)*

**Average loss of export turnover per months according to temperatures in Verona and to 2006 FR & IT data**



### *3/ Potential impact (To Verona - 5)*

**Cumulative loss of turnover from May to Sept. in Verona**



**Just for Italy exports**

## Direct potential impact

- Present exports amount to 2.3 billions €
- A number of countries (FR, NL, DE, IT, GB, IE, DK, GR, PT, ES, BE, LX) declare 1,9 billions € in exports turnover, i.e. 70% of the total EU export turnover
- Between 20 to 25 % of losses, i.e. 500 millions €, around 520,000 head.

## Indirect potential impact

- Transport economy : 520,000 head = around 10 000 trucks ....
- Breeders : possibility not to sell the production during certains months
  - » Disponibility and cost of alimentation
  - » Changing seasons of birth

# 4/ Conclusion

- STOP to demagogy
- We need a coherent and a responsible regulation to be able to invest in a right way, with common goals and calendar...

.... If possible ....

